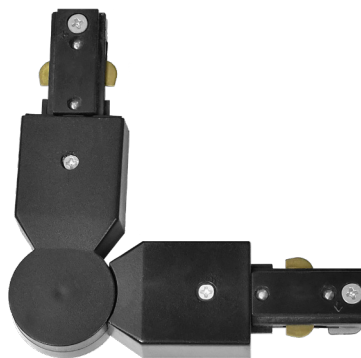


MEVA PRO Flex Connector-B Black



EDO777530



Connector MEVA PRO Flex Connector-B Black

Rail lighting is an innovative solution that gives an endless number of combinations, personalization possibilities and creating unique illumination of the room. The rail system is a whole set of elements- rails, connectors, power supplies and plugs.

SPECIFICATIONS EDO777530

Application:	inside
Connector type:	flexible B
Type of system:	track MEVA PRO
Type of assembly:	surface
Installation site:	ceiling
Colour:	black
Type of finish:	mat
Material:	PC, steel
Dimensions:	
-width [mm]:	35mm
-height [mm]:	17mm
-length [mm]:	194mm

TECHNICAL DATA

Rated voltage [V]:	110-265 V AC
Rated frequency [Hz]:	50-60 Hz
Number of wires:	3
Number of phases:	1
Maximum load:	800W, 10A
IP:	IP20
Protection class:	I
Mercury content:	no
Environmental conditions [°C]:	-20...60°C

LOGISTIC DATA

Collective packaging [pc.]:	100pc
Weight with packaging [g]:	96g

EAN:

